

# STAFF

Sports Uniform Catalogue



  
**SURRIDGE**

*Crafted by Surridge*  
Since 1867



# CONTENTS

COMPANY BACKGROUND

EXPERIENCE

BLADE RANGE

DUAL RANGE

FUSE RANGE

DUAL CAMO

MADE TO ORDER

BESPOKE EXAMPLES

SIZING CHARTS

WEB SHOP

*Crafted by Surridge*  
Since 1867

*Stuart  
Surridge*

In 1867 Percy Stuart Surridge created a sports brand. He applied the principles of tradition and craft, with the concept of bringing innovation to improve performance, creating product defined by craftsmanship, originality and Britishness.

Today, we are a brand that not only connects with our markets and consumers but keeps with our origins and principle's set over 150 years ago.

Surridge Sport head office, warehousing and production facilities are based in Burnley, Lancashire. The site has in house embroidery, manufacturing, print and embellishment facilities along with a dedicated design and product development team and a fully equipped distribution/customer service team. This allows Surridge the flexibility to manage and service its portfolio of accounts simply and efficiently, maintaining day to day fulfilment of orders as well as looking to make improvements and handle any quick turnaround of kit that may be required. Careful planning with account management shall ensure the organisation's needs will be prepared for in advance and progressed in an organised and agreed fashion.

The company is wholly family owned in the UK and is self-financed operating from our own custom built facilities in Lancashire of 60,000 sq ft. We will be happy to produce copies of our audited accounts to satisfy any due diligence procedures and we formally extend an open invite to any of your personnel to visit us at any time.

Surridge Sport uses factories in the Far-East for production of the proposed range. We have developed strong relationships with the suppliers and have worked with them for many years. We also have employees based in the factories to help manage the supply.

## OBJECTIVE

Surridge Sport aim to supply you with a commercially attractive proposal and a high performance playing and training range at competitive prices. We also guarantee a high level of contract management, quality of product and a seamless transition of supply.



# EXPERIENCE

After a rigorous process involving a variety of sports brands Cheltenham College decided to stay with Surridge for our sports kit provision. We have a long-standing and good relationship with the company and one that is not based purely on kit provision. Surridge have become part of College and understand our needs and demands of the school. The quality of kit provided for all pupils is modern, a competitive price and of an excellent quality that addresses the demands of sport in these modern times. Customer service is good, both parties understand the need to work collaboratively for the pupil's best interests and to ensure they are getting the best possible experience in the ordering and delivery of their garments.

**Ben Marsden – Director of Sport**



George Abbot School



Thomas Telford School



Madeley School



Sandbach School



St. Edwards School



Bristol University



Hampton School



Peter Symonds School



Aysgarth School



Brentwood School



Wilmslow High School



Sir Thomas Boteler School



St. Lawrence College



Halliford School



Salesian College



**BLADE**  
**TRAINING RANGE**

Blade is a unique stock training range, available in 12 different colourways.





## Blade Training T-shirt

SUR365

Regular Fit, performance polyester pique, crossover V-Neck Forward position side seams with contrast insert. Contrast back yoke with embroidered SS logo. French seam shoulder construction for comfort and durability Forward side seams with contrasting coloured insert. Embroidered Surridge Logo to chest  
Fabric weight: 150gsm.



- SJ
- MJ
- LJ
- YTH
- S
- M
- L
- XL
- XXL
- XXXL



Black/Amber/White    Black/Orange/White    Black/Purple/White    Red/Black/White    Emerald/Black/White



Royal/Navy/White    Royal/Navy/Amber    Sky/Navy/White    Bottle/Navy/Amber    Emerald/Navy/White    White/Navy    Maroon/Navy/White    Red/Navy/White



## Blade Polo Shirt

SUR366

Performance Polyester pique, 3 button placket with 1x1 polyester rib collar. Forward position side seams with contrast insert.

Contrast back yoke with embroidered SS logo, French seam shoulder construction for comfort and durability.

Forward side seams with contrasting coloured insert embroidered Surridge Logo to chest.

Fabric weight: 150gsm

- SJ
- MJ
- LJ
- YTH
- S
- M
- L
- XL
- XXL



Black/Amber/White    Black/Orange/White    Black/Red/White    Black/Purple/White    Black/Emerald/White



Navy/Bottle/Amber    Navy/Royal/Amber    Navy/Royal/White    Navy/Sky/White    Navy/Maroon/White    Navy/Red/White    Navy/Emerald/White







## Blade Performance Top

SUR368

Performance Polyester French Terry  
Material Contrast Chest Panel and  
contrast back panel  
Half Zip with SS performance locking  
rubber zip toggle  
French seam shoulder construction  
for comfort and durability  
Forward side seams with contrasting  
colour insert  
Embroidered Surridge Logo to chest  
Fabric Weight: 250gsm



- SJ
- MJ
- LJ
- YTH
- S
- M
- L
- XL
- XXL



## Blade Hoody

SUR367

Polyester and Cotton fabric blend  
Contrasting inner hood lining and  
chest panel  
French seam shoulder construction  
for comfort and durability  
Branded eyelets with tube draw cord  
Large front hoodie pocket  
Forward side seams with  
contrasting insert  
Embroidered Surridge Logo to chest  
Fabric Weight 300gsm



- SJ
- MJ
- LJ
- YTH
- S
- M
- L
- XL
- XXL







## Poplin Pant

Mens and Ladies Fits Available

SUR381

Soft microfibre poplin outer.  
Straight leg traditional kit.  
Extra large ¾ side leg zip coming up to just below the pocket. Soft cotton inner lining.  
Lycra gusset for flexibility.  
Embroidered SS Surridge logo and 2 zipped pockets.

- SJ MJ LJ YTH
- S M L XL XXL XXXL
- 8 10 12 14 16 18



## Ripstop Track Pant

Mens and Ladies Fits Available

SUR375

Matte texture Ripstop-Polyester blend with mesh upper lining and Nylon Tafeta lower lining.  
Lycra gusset for flexibility and comfort with a drawcord.  
12" side seam lower zip at hem.  
More modern slimmer leg fit from knee downwards.

- SJ MJ LJ YTH
- S M L XL XXL
- 8 10 12 14 16 18







## Blade Slim Tek Pants

SUR378



- SJ MJ LJ YTH
- S M L XL XXL

French Terry material with polyester lycra insert at calf.  
Two invisible zip pockets for security.  
Embroidered Surridge logo to thigh.



## Performance Legging

DU028

85% Polyester - 15% Elastane  
Printed Surridge logo to thigh. Available in 17 colour Options. Dual print can be added for extra colour to calf.  
Available with and without SS logo.  
2 side pockets for mobile and two smaller pockets (one with zip) for personal belongings.

- 7-8 9-10 11-12
- 8 10 12 14 16 18





## Pocketed Training Ripstop Shorts

SUR331

Polyester Ripstop Wind Resistant Fabric.  
2 pockets and Embroidered  
Surridge Logo to thigh.  
Fabric Weight: 115gsm

Mens and Ladies  
Fits Available



## Blade Skort

SUR380

100% Performance Pique material  
with polyester elastane lining  
Embroidered SS to Hem.



## Blade Training Shorts

SUR370

100% Polyester material.  
2 pockets and Embroidered  
Surridge Logo to thigh.  
Fabric Weight: 160gsm



## Baseball Cap

ONE SIZE

SUR421

Classic fitted cap with comfortable five panel design.  
Eyelet mesh back panels for improved air flow & ventilation.  
Interior woven tape reinforcement for strength & durability.

Adjustable tab at the back with hook & loop  
closure for custom fitting.



## NEW Fuse Flexi Cap

SUR470

The Fuse Flexi cap is a modern shaped cap that is the lighter, sleeker, smarter  
and more comfortable choice. It's 6 panels are well finished, combining with  
a lightweight visor fabrication and new, three-layer, multifunction sweatband.  
Inner sweat band and elastic fitting gives the most comfortable fit there is.



Maroon



Navy



Bottle

## Small Holdall

SUR364

Size: 64cm x 27cm x 30cm



Black



Navy



## Dual Backpack

DU004

Size: 55cm x 38cm



Black



Navy





# DUAL

TRAINING RANGE



## YOUR COLOURS YOUR WAY

Our entire dual range of product can come with or without our SS branding. Our SS can also be branded in different colours to match the trim colour on this entire range.

17 DUAL COLOUR OPTIONS



**NEW!** Diagonal Stripe design also available



**UNBRANDED** items are available with or without the SS logo





# Dual Training Shirt

DU009

Performance Polyester pique fabric with contoured underarm side panel in breathable reverse pique fabric. Forward side seam detail with flat-lock stitching for the ultimate smooth and comfort. Stand collar and raglan seam sleeve and contrast colour graphic print available on shoulders. Choice of SS and dual print colours to suit your branding.

Unisex Sizing

- SJ
- MJ
- LJ
- YTH
- S
- M
- L
- XL
- XXL
- XXXL

Also available in (except Bottle, Maroon & White)

- XXSJ
- XSJ

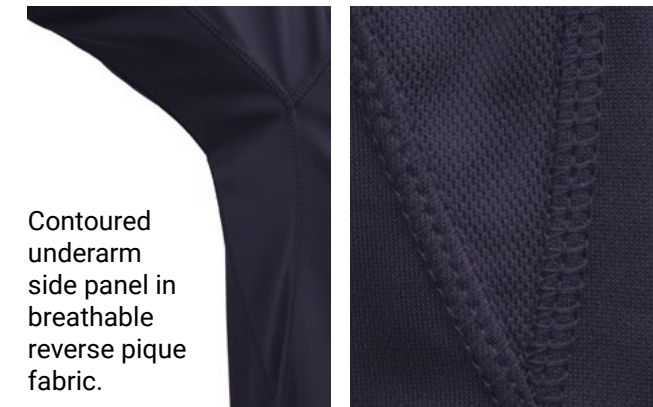
3-4yrs 5-6yrs

Ladies sizes available with a slight capped sleeve.

- 4/6
  - 8/10
  - 12/14
  - 16/18
- XSmall Small Medium Large



Black/White



Contoured underarm side panel in breathable reverse pique fabric.



**NEW!**  
Diagonal Stripe design also available



Navy/Emerald



Red/White



Bottle/White



Royal/White



Maroon/White



White/Black



Amber/White



Emerald/White



Orange/White



Purple/White



Sky/White





## Dual Polo

DU018

Performance Polyester pique fabric with contoured underarm side panel in a breathable reverse pique fabric.

Placket neck collar and colour contrast Dual print on both shoulders.

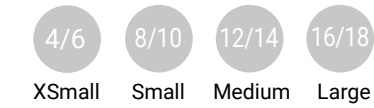
Branded Vapadri neck tape.

Choice of SS and dual print colours to suit your branding.

Unisex Sizing.



Ladies sizes available with a slight capped sleeve.



**UN** BRANDED



Black



White



Navy



Royal



Red

**NEW!**  
Diagonal  
Stripe design  
also available







# Dual Gym Shirt

DU014

Black Marl, Grey Marl, Navy Marl, Royal Marl.

Performance polyester marl fabric with contoured underarm side panel in breathable interlock fabric. Crew neck collar and contrast colour 'Dual' graphic print on both shoulders. Choice of SS and dual print colours to suit your branding.

Unisex Sizing.

- SJ
- MJ
- LJ
- YTH
- S
- M
- L
- XL
- XXL
- XXXL

**NEW!**  
Diagonal  
Stripe design  
also available



**UN BRANDED**







## Dual Performance Top

DU013

Black Marl, Grey Marl, Navy Marl, Royal Marl.

Made from melange Pro-Polyester with a lightly brushed feel and soft inner fleece lining. Subtle marl printed body. 1/4 Zip neck detail for breathability.

Dual print on both shoulders and reflective zip detailing.

Choice of SS and dual print colours to suit your branding.

Unisex Sizing.



# UN BRANDED



**NEW!**  
Diagonal  
Stripe design  
also available







## Dual Zipped Hoodie

DU012

Grey, Royal, Navy or Black.

100% performance polyester and bonded fleece lining. Modern slim fit with toggles on hem for adjustable sizes.

Full zip hoodie with reflective, water resistant zip detail.

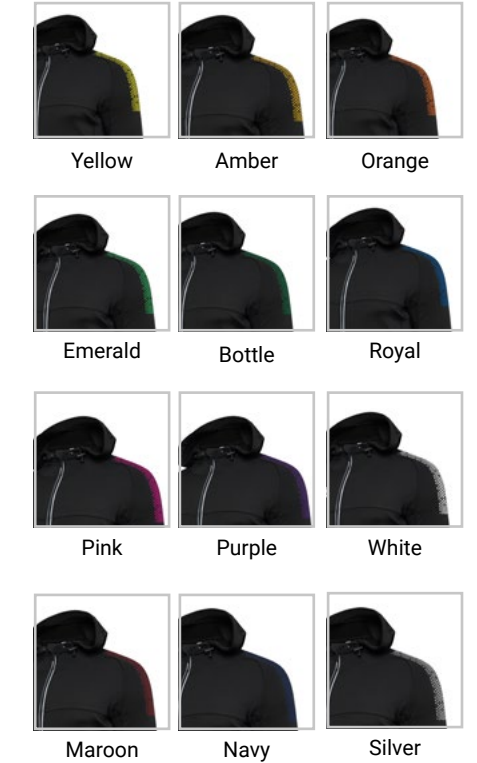
Two large zip pockets with soft fleece lining and elastic binding at sleeve ends.

Choice of SS and dual print colours to suit your branding.

Unisex Sizing.



**UN** BRANDED



**NEW!**  
Diagonal Stripe design also available



Toggle features to keep out the wind. French shoulder seam for comfort and dual print to shoulder.





## Dual Pro Training Vest

DU033

Black or Navy

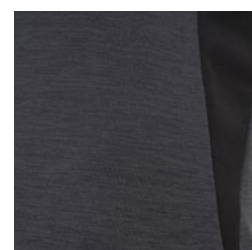
100% performance polyester melange super stretch material. Nicely fitted shirt perfect for the gym and those warm days training outside.

- SJ
- MJ
- LJ
- YTH
- S
- M
- L
- XL
- XXL



**UN BRANDED**

17 DUAL COLOUR OPTIONS



Contoured underarm side panel in breathable reverse pique fabric.

## Dual Hajib

DU030

Black or Navy

100% performance polyester, lightweight and breathable.

Available in two sizes: XS/S and M/L



**UN BRANDED**

17 DUAL COLOUR OPTIONS





# DUAL SLIM TEK PANTS

## Dual Slim Tek Pants

DU019

Interlock Polyester material with Polyester Lycra insert at calf.

Two invisible zip pockets for security.

Printed Surridge logo to thigh.

Choice of SS and dual print colours to suit your branding.

Unisex sizing:



Also available in



3-4yrs 5-6yrs



UN BRANDED



17 DUAL COLOUR OPTIONS

**NEW!**  
Diagonal  
Stripe design  
also available





## Dual Short

DU020

Poly peached Micro-fibre blend with modern shorter leg length, more suited to gym and physical exercise. Elasticated hem with drawcord for flexibility and comfort.

17 Trim Colours.



**UNBRANDED**

17 COLOUR OPTIONS



## Dual Active Short

DU029

Soft feel performance stretchy microfibre material. Half leg with poly/lycra inner. Now with longer inner pant to be lower than the short.

17 SS Colours.

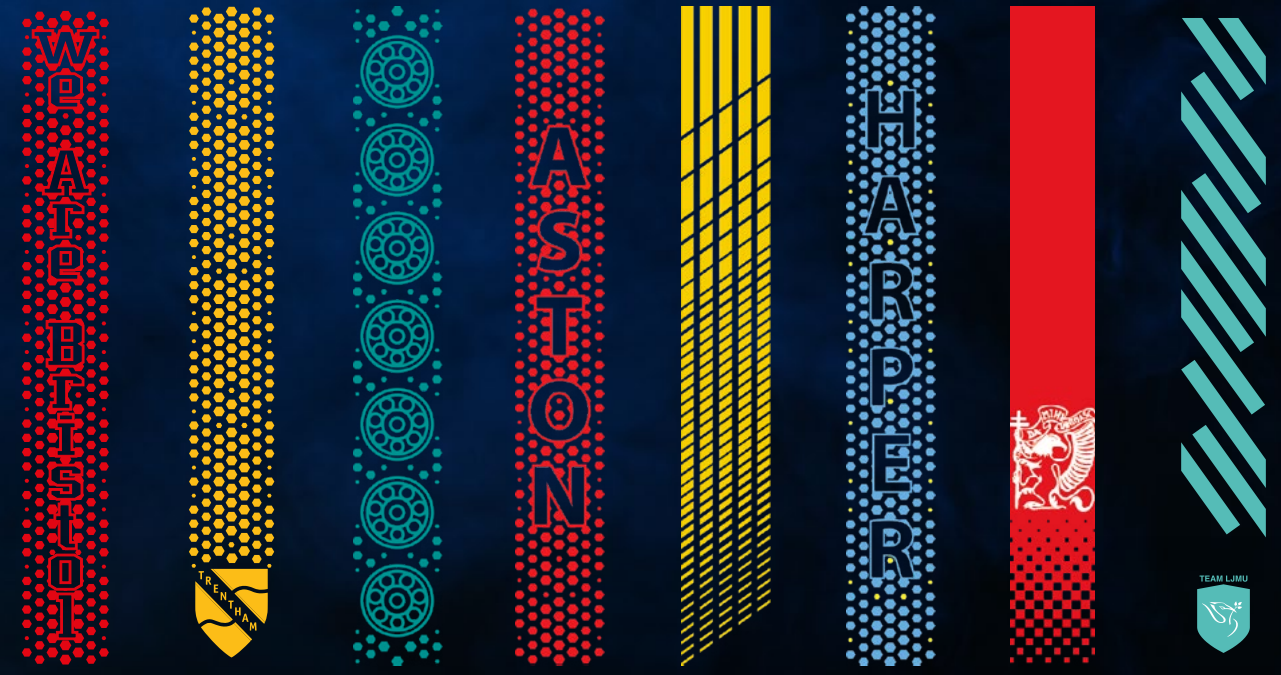


# DUAL

TRAINING RANGE

We can also produce a bespoke print with a minimum of 100 prints (50 garments).

All products showing the unbranded logo are available without the SS logo.



**UNBRANDED**





**THE CAMO RANGE**

## Camo Training Shirt

DU031

Black and Navy.

Performance camo interlock fabric with contoured under-arm side panel.

Forward side seam detail with flat-lock stitching for the ultimate smooth, cool and comfort.

Crew neck self fabric collar and raglan seam sleeve and contrast colour graphic print available on shoulders

SS logo colour to match the Dual Print.

Unisex Sizing:



**UN | BRANDED**







## Camo Performance Top

DU032

Black and Navy.

275 gsm structured soft feel camo woven polyester material.

Ultra modern fitted ¼ zip collar with fitted sleeves and banded sleeve hems.

Adjustable draw cords in hem.

Dual print on both shoulders and reflective zip detailing.

SS printed to chest to match Dual Print colour.

Unisex Sizing:



**UN** BRANDED

17 SS COLOUR OPTIONS





## Camo Polo Shirt

DU018

Black, Red, Royal, Navy and White.

Performance Polyester pique fabric with contoured underarm side panel in a breathable reverse pique fabric.

Placket neck collar and colour contrast  
Camo print on both shoulders.

Branded Vapadri neck tape.

Unisex Sizing.



**UN** BRANDED

17 SS COLOUR OPTIONS



## Camo Hoodie

DU012

Black, Grey and Navy.

100% performance polyester and bonded fleece lining.

Modern slim fit with toggles on hem for adjustable sizes.

Full zip hoodie with reflective, water resistant zip detail.

Two Large zip pockets with soft fleece lining and elastic binding at sleeve ends.

Unisex Sizing.



**UN** BRANDED

17 SS COLOUR OPTIONS





## Camo Shorts

DU020

Black and Navy.

Poly peached Micro-fibre blend with modern shorter leg length, more suited to gym and physical exercise.

Elasticated hem with rawcord for flexibility and comfort.



## Camo Active Shorts

DU029

Black and Navy.

Soft feel performance stretchy microfibre material.



**UNBRANDED**



## Camo Skinny Pants

DU019

Black or Navy.

Interlock Polyester material with Polyester. Lycra insert at calf. Two invisible zip pockets for security. Printed SS logo to thigh.



Also available in



3-4yrs 5-6yrs



**UNBRANDED**

## Camo Leggings

DU028

Black or Navy.

Half leg with poly/lycra inner. 17 SS Colours. Printed SS logo to thigh.







## Fuse T-Shirt

DU365

Black or Navy.

Performance Polyester pique, crossover V-Neck.

Forward position side seams with contrast insert.

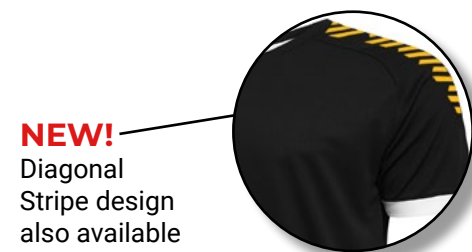
Contrast back yoke, French seam shoulder construction for comfort and durability.

Forward side seams with contrasting coloured insert.

Printed SS Logo to chest.  
Fabric weight: 150gsm.



**UN | BRANDED**



**NEW!**  
Diagonal  
Stripe design  
also available



## Fuse Polo Shirt

DU366

Black or Navy.

Performance Polyester pique, 3 button placket with 1x1 polyester rib collar.

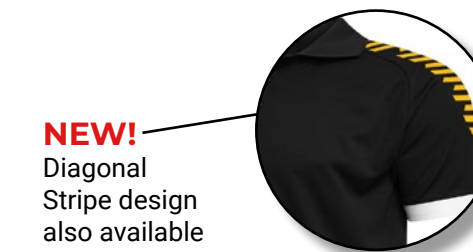
Forward position side seams with contrast insert Contrast back yoke, French seam shoulder construction for comfort and durability.

Forward side seams with contrasting coloured insert.

Printed SS Logo to chest.  
Fabric weight: 150gsm.



**UN | BRANDED**



**NEW!**  
Diagonal  
Stripe design  
also available







## Fuse 1/4 Zip Performance Top

DU368

Black or Navy.

Made from heavy brushed french terry material to give warm and comfort.  
1/4 Zip neck detail for breathability.  
Dual print on both shoulders and reflective zip detailing.  
Personalise the Fuse range with SS logo colour to match the chosen Dual print.

Printed SS logo to chest.  
Fabric weight: 275gsm.

- SJ MJ LJ YTH
- S M L XL XXL XXXL

Also available in

- XXSJ XSJ

3-4yrs 5-6yrs

# UNBRANDED



**NEW!**  
Diagonal  
Stripe design  
also available



## Fuse Hoodie

DU367

Black or Navy.

Polyester and Cotton fabric blend.  
French seam shoulder construction for comfort and durability.  
Branded eyelets with tube draw cord.  
Large front hoodie pocket.  
Forward side seams with contrasting insert.  
Fabric Weight: 300gsm.

Personalise the Fuse range with SS logo colour to match the chosen Dual print.

Printed SS logo to chest.

- SJ MJ LJ YTH
- S M L XL XXL XXXL

# UNBRANDED



**NEW!**  
Diagonal  
Stripe design  
also available





# Fuse Shorts

SUR457

Black, Navy and Royal.

Performance Polyester matching to the polo and t-shirt in the same range, no pockets, with elasticated hem for comfort.



Also available in



3-4yrs 5-6yrs



# Dual Training Jacket

DU002



Black, Navy, Royal and Red.

Wax Coated outer shell, light and fully waterproof.

Reflective, water resistant zip detail and 2 zip pockets

Mesh lined hood with adjustable toggles.

Underarm vents to stay breathable but warm.

Unisex Sizing.



# UN BRANDED

17 SS COLOUR OPTIONS





## Dual Rain Jacket

DU003



Black or Navy.

Thick Wax Coated outer shell, rain-proof and soft fleece lined.

Two zip pockets and placket zip cover on body and pockets.

Taped seams so fully waterproof

Unisex Sizing.



**UN** BRANDED

17 SS COLOUR OPTIONS



## 1/4 Zip Rain Jacket

DU341



Black or Navy.

110 gsm Polyester, microfibre mesh lining with wind resistant outing. Fully showerproof. Quater zip fastening with velcro storm flap. Contrast flat-locking over the shoulders. Front zip pockets and adjustable toggles with bungee cord at the hem.

Concealed hood with toggle and velcro fastener. 2.5cm elasticated cuff and embroidered SS on chest.



**UN** BRANDED

17 SS COLOUR OPTIONS



## Match Day Jacket

SURBEHR-002



Black or Navy.

Water repellent finish fully wadded padded jacket on body and sleeve.

Padded fixed hood for extra warmth.



**UN** BRANDED

17 SS COLOUR OPTIONS



## NEW Dual Elite 1/4 Zip Training Jacket

DU381



Black or Navy

100% Polyester Dobby Spandex. Two pockets with zip. Binding at hem and cuffs.



**UN** BRANDED

17 DUAL COLOUR OPTIONS





## Holkham Down Feel Jacket

SUR181



Black and Navy.

A cosy, highly fashionable, fitted and soft to touch down feel jacket with hand filled poly wadding for superior warmth and a StormDri water repellent rip stop micro peach outer. The perfect lightweight jacket for cold and damp winter days.

Men's:  S  M  L  XL  XXL  XXXL

Ladies:  XS  S  M  L  XL  XXL



## Supersoft Padded Jacket

SURR233



Black and Navy.

Showerproof. Windproof. Hinged locker patch in neck for self-branding. Soft bound cuff and hem. Contrast lining and trim. Reflective hip detail. Integral hood. Full front zip. Zip pockets. Hangtag. Solid colours ideal for schoolwear. Super soft, lightweight and warm. Easy to pack, compact storage. Quiet to wear.

Men's:  S  M  L  XL  XXL  XXXL

Ladies:  XS  S  M  L  XL  XXL

Age:  2/3  3/4  5/6  7/8  9/10  11/12  13/14



## Ice Bird Padded Gilet

SUR193



Black and Navy.

The gilet version of the modern classic design. This super lightweight and perfectly tailored contemporary gilet offers amazing warmth without weight from it's super air-soft handle and hand filled polyester wadding.

Men's:  S  M  L  XL  XXL

Ladies:  XS  S  M  L  XL  XXL



## Core Nova Lux Padded Gilet

SURR223



Black and Navy.

Great cold weather protection, super warmth without any weight, the Nova Lux padded bodywarmer offers comfort and style, the perfect layering gilet.

XS  S  M  L  XL  XXL  XXXL





## Premier Long Sleeve Sug

SUR318

Black, Royal, White or Navy.

Surrige Under Garment 'Sug'.  
96% Polyester, 4% Lycra.  
Flatlocking seam detail for comfort. Slim fit. Embroidered Surrige logo to chest



**UN** BRANDED

17 SS COLOUR OPTIONS



## Premier Short Pant Sug

SUR320

Black, Royal, White or Navy.

Surrige Under Garment 'Sug'.  
96% Polyester, 4% Lycra. Flatlocking seam detail for comfort. Slim fit. Embroidered Surrige logo to leg



**UN** BRANDED

17 SS COLOUR OPTIONS



## School Striped Ties

100% Polyester. Minimum order applies.

What makes our school ties special is that they are completely custom made to your design, our team will help guide you through the easy process of personalising your school ties from start to finish. We can manufacture virtually any design incorporating your school name, logo, design or message to meet your individual specification. Our custom made ties are extremely affordable and finished to a very high standard.



The above products are example items only.

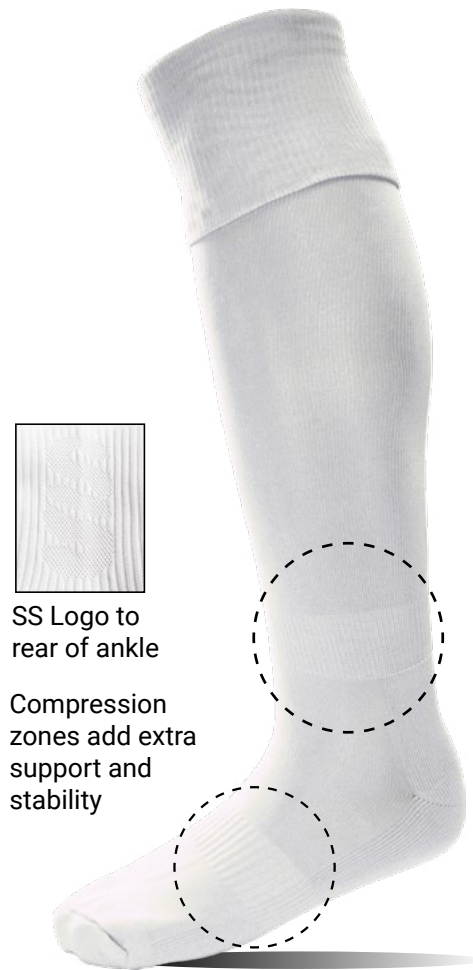


# Playing Socks

SURF006

Compression zones add stability, shock absorption & superb comfort. Extra padded cotton sole. Inclusive SS Logo to rear of ankle.

12-2 3-6 7-11



SS Logo to rear of ankle

Compression zones add extra support and stability



White

Emerald

Maroon

Navy

Dark Navy

Orange

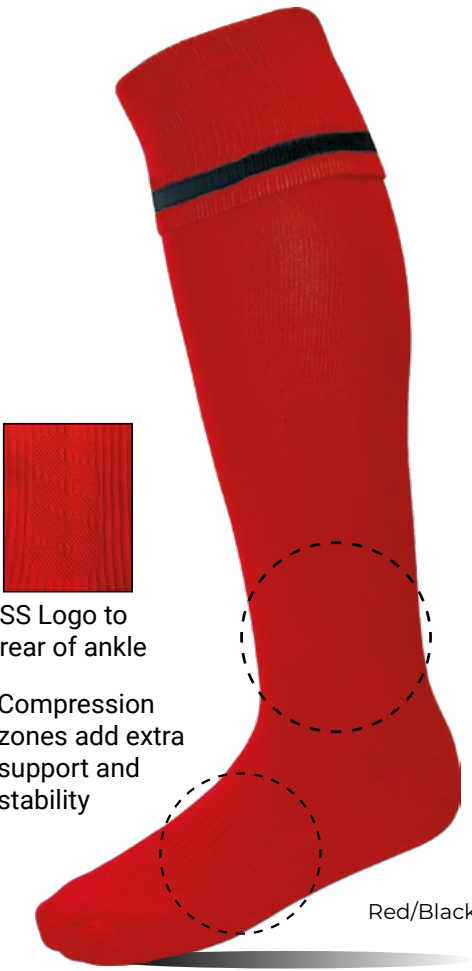
Royal

Yellow

# Single Band Sock

SURF027

12-2 3-6 7-11



SS Logo to rear of ankle

Compression zones add extra support and stability

Red/Black



Amber/Black

Black/White

Emerald/White

Bottle/White

Royal/White

Yellow/Navy

Maroon/White

Navy/Red/White

Navy/Sky

Navy/White

Red/White

Sky/White



# Surridge Quarter sock

SUR480

100% acrylic, modern quarter socks with printed gripper on the sole for comfort and styling. Minimums apply.

Royal, Black, Red, Emerald, Navy, Maroon and White.

3-6 7-11



## ECO DRI



THIS MATERIAL IS MADE FROM 100% RECYCLED POLYESTER YARN, PRODUCED FROM RECYCLED WATER BOTTLES.



THIS PERFORMANCE FABRIC IS DESIGNED FOR ATHLETES. GARMENTS MADE WITH VAPADRI™ TECHNOLOGY CAN HELP THE WEARER STAY "DRI" AND AS A RESULT CREATE ZERO DISTRACTION, ALLOWING YOU TO CONCENTRATE 100% ON THE GAME.



- LIGHTWEIGHT
- WICKING
- BREATHABLE
- ANTI-STATIC
- MACHINE WASHABLE
- FAST DRYING

ECODRI is an exclusive range of materials made with VAPADRI technology for Surridge Sport and other major sports brands. EcoDri is a 100% recycled material that is used in the dye sublimated process for most playing garments. Surridge Sport can offer an Eco Dri material for all playing garments.

EcoDri is made from 100% recycled polyester yarn, produced from water bottles. This process is managed through our own research and development with our material factories in the Far East. All the EcoDri material is made with VapaDri technology, meaning that the performance of the material is still to the highest standards that we offer. The EcoDri material is still at a premium in price but we are convinced that our pricing is still the most competitive on the market against our competition.



# Reversible Games/Rugby Shirts

100% Polyester Bonded Fabric / 300gsm  
We are able to offer a bonded fabric or a sublimated garment.





# MADE TO ORDER



- Providing over 60 different sports with thousands of designs
- Fully bespoke designs unique to you
- Short lead times
- Perfect for School Tours

**KIT BUILDER AVAILABLE ONLINE**



**Compliment your design with our stock range of shorts and socks**





# BESPOKE TRAINING WEAR

TO MATCH OUTFIELD -  
FOR A MORE BESPOKE LOOK.

# BESPOKE TRAINING WEAR





# BESPOKE TRAINING WEAR



# BESPOKE TRAINING WEAR





# Create your own club webshop.

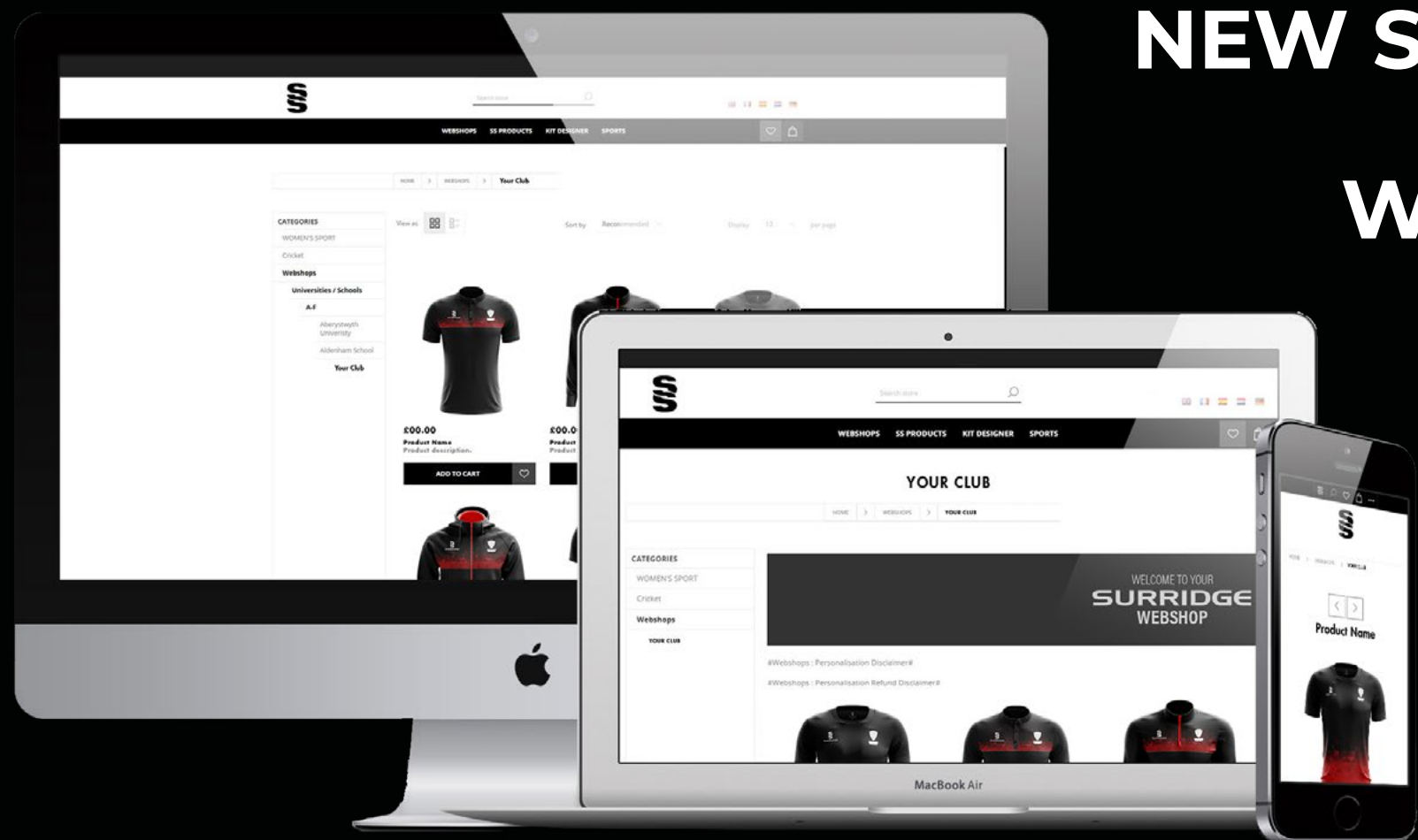
**Completely Free**  
No additional charges for setting up your own club webshop.

**Easy Personalisation**  
Add optional extras such as print, embroidery, initials, names and numbers.

**Staff Voucher System**  
Voucher system whereby all staff members can order their own kit and the school can be invoiced.

**Hassle Free**  
No need to collate team orders as everyone can order individually.

**Quick Lead Times**  
Stock items have a fast turnaround within 10 working days from order placement.



# NEW STAFF KIT ONLINE WEBSHOP 2023

SIZE	SJ	MJ	LJ	YTH	S	M	L	XL	XXL	XXXL
TOPS/SHIRTS/JACKETS										
MENS CHEST - INCH	26/28	28/30	30/32	36 36	38 38	40 41	42 44	44 48	45 52	47 56
MENS CHEST - CM	66/71	71/76	76/81	91.5 91.5	96.5 96.5	101.5 104	106.5 111.5	111.5 122	114.5 132	119.5 142
LADIES SIZE GUIDELINE*				8 8	10 10	12 12	14 16	16 20	18 22	20 24
LADIES BUST - INCH				30 30	32 32	34 34	36 38	38 42	40 44	42 46
LADIES BUST - CM				76 76	81 81	86 86	91 96	96 106	101 111	106 116
JUNIOR AGE GUIDE	7/8	9/10	11/12	13/14	13/14					
JUNIOR HEIGHT - CM	128	140	152	164	164					
PANTS/SHORTS										
MENS WAIST - INCH	24	24/26	26/28	28/30	30/32	32/34	36/38	40	42	
MENS WAIST - CM	61	61/66	66/71	71/76	76/81	81/86	91/97	102	107	
LADIES WAIST - INCH				24	26	28	30	32	34	36
LADIES WAIST - CM				63.5	66	71	76	81	86	91
DRESS LENGTH					SHORT	STANDARD	LONG	X LONG	XX LONG	
DRESS LENGTH - INCH/CM					80/31.5	84/33	88/34.5	92/36	96/37.5	
JUNIOR AGE GUIDE	7/8	9/10	11/12	13/14						
JUNIOR HEIGHT - CM	128	140	152	164						
REG	REL	SJ	MJ	LJ						
Regular Fit	Relaxed Fit	Small Junior	Medium Junior	Large Junior						

**All French Terry Garments**

100% POLYESTER

GENTLE MACHINE WASH WITH SIMILAR COLOURS

WASH INSIDE OUT

DO NOT BLEACH

LINE DRY WITHOUT DELAY

DO NOT TUMBLE DRY

COOL IRON

DO NOT IRON OVER PRINTS

DO NOT DRY CLEAN

DO NOT USE FABRIC SOFTENERS

KEEP AWAY FROM FIRE

**Rain Jackets & Coaches Jackets**

100% NYLON

GENTLE MACHINE WASH COLD

DO NOT BLEACH

LINE DRY WITHOUT DELAY

DO NOT TUMBLE DRY

DO NOT DRY CLEAN

DO NOT USE FABRIC SOFTENERS

KEEP AWAY FROM FIRE

**Football, Rugby & Cricket Shirts**

100% POLYESTER

MACHINE WASH

DO NOT USE SOFTENERS

USE MILD DETERGENT

WASH SEPARATELY

DO NOT BLEACH

LINE DRY

DO NOT IRON OVER PRINTS

DO NOT DRY CLEAN

KEEP AWAY FROM FIRE

**Football, Rugby & Cricket Shirts**

95% POLYESTER

5% ELASTINE

MACHINE WASH

DO NOT USE SOFTENERS

USE MILD DETERGENT

WASH SEPARATELY

DO NOT BLEACH

LINE DRY

DO NOT IRON OVER PRINTS

DO NOT DRY CLEAN

KEEP AWAY FROM FIRE

**Hoodies, Sweatpants & Sweatshirts**

35% COTTON

65% POLYESTER

WASH SEPARATELY BEFORE USE

MACHINE WASH GENTLE

DO NOT BLEACH

LINE DRY WITHOUT DELAY

DO NOT TUMBLE DRY

WARM IRON

DO NOT DRY CLEAN

KEEP AWAY FROM FIRE

**Trackpants, Tracktops & Shorts**

100% POLY MICROFIBRE

MACHINE WASH WITH SIMILAR COLOURS

DO NOT BLEACH

LINE DRY WITHOUT DELAY

DO NOT TUMBLE DRY

COOL IRON

WHERE APPLICABLE DO NOT IRON OVER PRINTS

DO NOT DRY CLEAN

KEEP AWAY FROM FIRE

**Bags, Caps, Accessories**

100% ACRYLIC

COOL HANDWASH SEPARATELY

DO NOT BLEACH

DO NOT TUMBLE DRY

RESHAPE WHILST DAMP

LINE DRY WITHOUT DELAY

DO NOT IRON

DO NOT IRON OVER PRINTS

KEEP AWAY FROM FIRE

Proud members of:

**SA THE SCHOOLWEAR ASSOCIATION**

Every child is worth it

[www.schoolwearassociation.co.uk](http://www.schoolwearassociation.co.uk)





**[www.surridgesport.com](http://www.surridgesport.com)**

**SDL Group Ltd, Britannia Centre,  
Network 65 Business Park,  
Burnley, Lancashire, BB11 5ST.**

**Tel: 01282 418418**

**Email: [sales@surridgesport.com](mailto:sales@surridgesport.com)**